

ELPHIN ***SPORTS*** --- ***CENTRE***

BASKETBALL - BADMINTON - TABLE TENNIS
INDOOR SOCCER - MARTIAL ARTS
MULTI PURPOSE STADIUM

KIOSK

COVID-19 SAFETY **PLAN & GUIDELINES**

VERSION 2.0

CONTENTS

1. INTRODUCTION.....	2
A) TASMANIAN PUBLIC HEALTH HOTLINE.....	2
2. QUEUE PROTOCOLS.....	3
A) ELPHIN SPORTS CENTRE KIOSK	3
B) QUEUE MAP	3
3. CLEANING & HYGIENE	4
4. REVISIONS	5

1. INTRODUCTION

The Elphin Sports Centre Kiosk (the Kiosk) is committed to taking all steps to safely prepare and sell food and drink products for its patrons to use during the COVID-19 (Coronavirus) pandemic. By following these guidelines, we will show how we will comply with minimum standards determined by Public Health and the requirements of the Work Health and Safety Act.

As such the following plan and guidelines have been developed by Elphin Sports Centre to outline how the Kiosk will work with its patrons to manage and minimize any potential transmission of Coronavirus.

This document is a supplementary document to the Elphin Sports Centre COVID-19 Safety Plan and Guidelines, which covers the management and prevention of the spread of COVID-19 within the Centre.

We have taken into account when doing this Kiosk COVID-19 Safety Plan and Guidelines, not just the level of risk of the virus spreading, but overall, the general wellbeing of our workers and patrons, so ensuring that all safety and hygiene measure that can be taken are in place to assist in minimizing any spread of the virus and ensuring that we comply with all Government and Health guidelines and regulations.

A) TASMANIAN PUBLIC HEALTH HOTLINE

The Public Health Hotline ensure Tasmanians have access to Coronavirus support and information.

As well as handling enquires from the general public, qualified clinical staff are available to provide advice to health professionals.

If anyone should feel unwell with cold or flu-like symptoms (including fever, runny nose, cough, sore/itchy throat or shortness of breath), please phone the Public Health Hotline on 1800 671 738 to arrange a referral for a COVID-19 test.

2. QUEUE PROTOCOLS

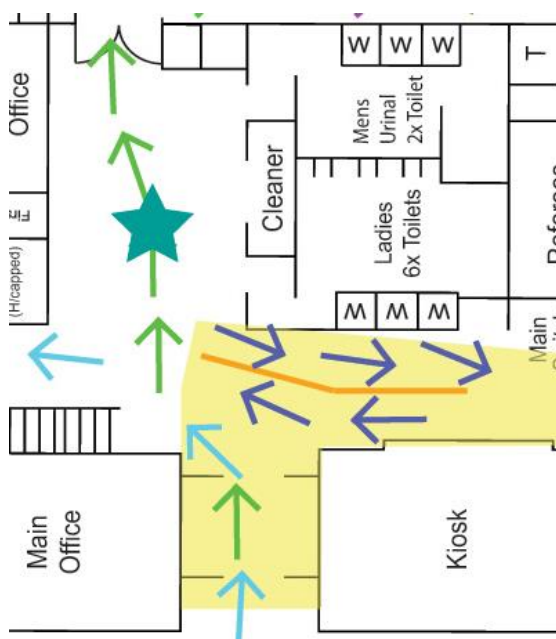
A) ELPHIN SPORTS CENTRE KIOSK

To help maintain appropriate physical distancing, the Elphin Sports Centre Kiosk will have a one-way queue with markings for patrons indicating the 1.5m spacing due to the limited access to both locations being shared.

The queue will only have space for approximately 5 people to queue and approximately 3 people to be served at the Kiosk at any one time.

B) QUEUE MAP

A map of the queue layout is as follows:



The Light Blue and Green Arrows indicate the flow of patrons in and through to the courts, while the Dark Blue arrows indicate the flow of patrons to and from the Kiosk and Basketball Tasmania Shop.

Note that the yellow shaded area has the potential to be limited in space and all patrons are required to be mindful of physical distancing.

3. CLEANING & HYGIENE

To manage and prevent any potential spread of Coronavirus the Elphin Sports Centre Kiosk has implemented the following cleaning and hygiene protocols including and above and beyond the normal food handling cleaning and hygiene requirements:

- Regular sanitising of surfaces where customers may touch.
- Cleaning & Sanitising of:
 - Door Handles
 - Fridge Handles
 - Tap Handles
 - Switches
 - Other High-Touch Areas
- Regular cleaning and sanitising of equipment and facilities.
- Regular handwashing
- Maintaining physical distancing where Possible for Staff.
- Items will be placed on the counter for customers to pickup to minimise contact between staff and patrons

4. REVISIONS

Summary of the revisions to this document can be seen in the table below.

Please make sure that you check regularly for the most up-to-date version as this document is subject to change.

Version 1.0	Initial Version
Version 2.0	Updated to meet Changes in Requirements